



MAHARERA NO.  
P52100025203  
[www.maharera.mahaonline.gov.in](http://www.maharera.mahaonline.gov.in)



GAWADE  
**GALAXY**  
RAVET

2 BHK Homes





GAWADE  
**GALAXY**  
RAVET

Gawade Construction Group is a trusted name in real estate for the last three decades in Pune and PCMC with a legacy of quality construction in industrial, residential and commercial spaces group is happy to introduce a new residential project in Ravet - Gawade Galaxy. The Intelligent Homes are specifically designed to make Work from Home easy, Online Schooling easy, and Relaxation easy, too. With extra space for online commitments, modern amenities for relaxation and a well-connected location for easy travel, the homes are intelligent in many aspects. Strategically located in Mukai Chowk at the beginning of the Expressway, Galaxy is central to all your needs - work, pleasure, entertainment, education, healthcare, and more.

Experience the intelligent side of life at Galaxy - where every aspect is designed, keeping you in mind for a truly smart future.

---









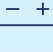









# COMPACT. COZY. INTELLIGENT

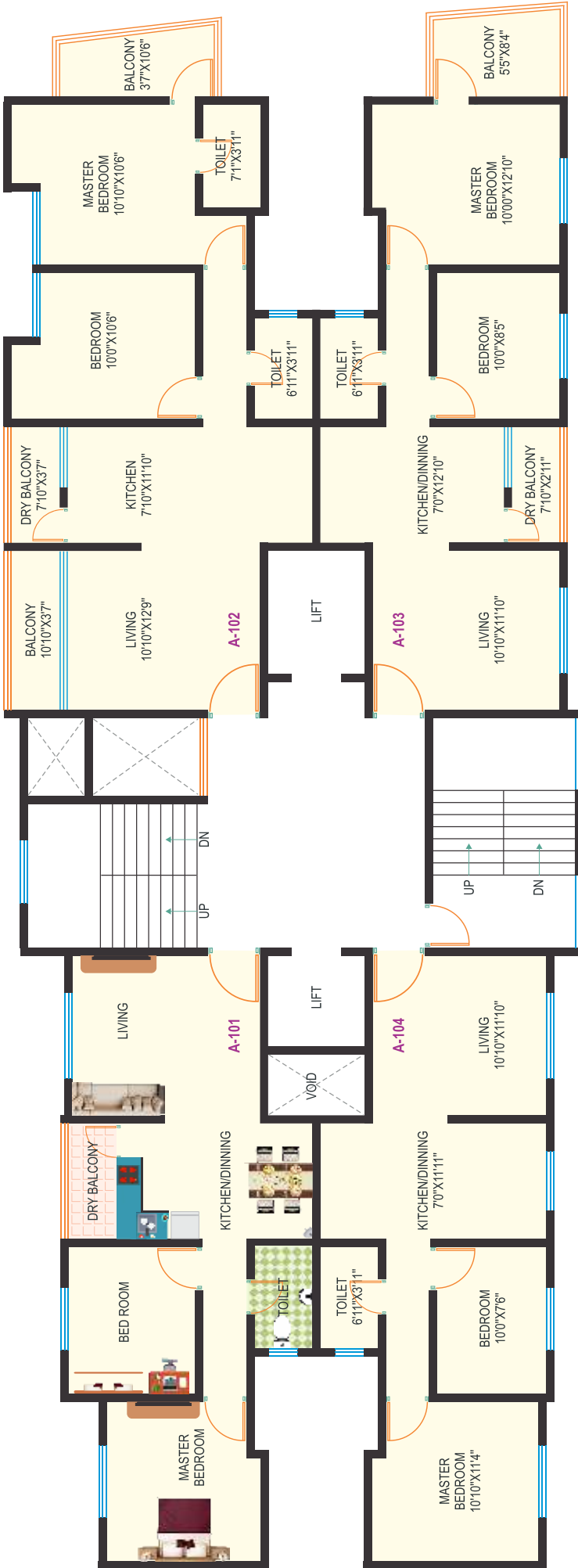
## SPECIFICATIONS

-  Vitrified Tile flooring for Living/ Dining/Bedroom
-  Bathroom Ceramic Designer Floor tiles & Glaze Tiles for Wall of Standard Make Up to 7 ft
-  Decorative Main Door with Safety lock of Standard make and flush door for internal Doors
-  Granite kitchen platform with stainless steel sink, Designer Sanitary Ware of Cera or Equivalent make
-  Concealed PVC Plumbing with Standard make fittings in bedroom
-  Concealed Copper wiring of Standard make accessories
-  Three Track Aluminum Powder Coated windows with mosquito nets
-  TV point in Living and A.C Point in Master Bedroom
-  Kone or Equivalent Lift with Genset Backup
-  Security Cabin
-  Video Door Phone for all flats
-  CCTV Camera Unit

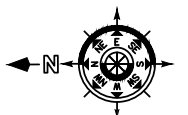
## AMENITIES

- ▶ Children Play Area
- ▶ Landscape Garden
- ▶ Open Gym

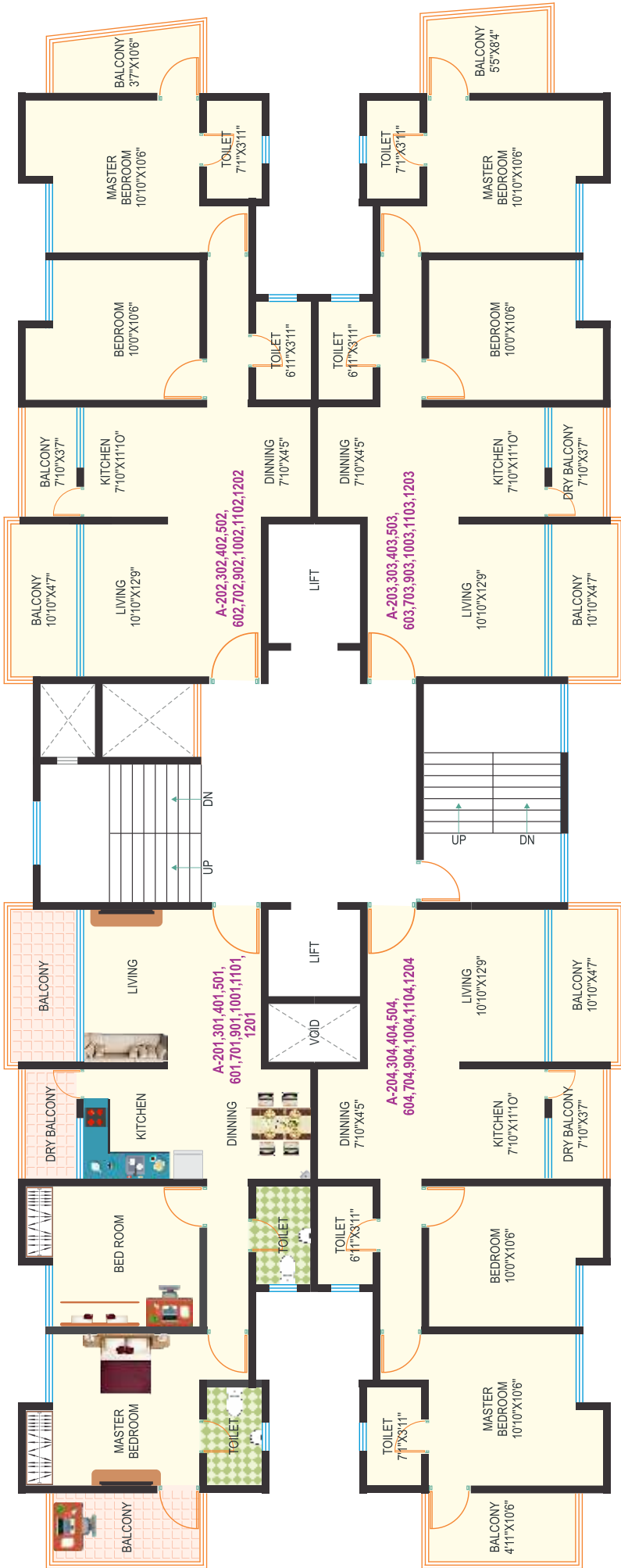
# A - WING 1<sup>ST</sup> FLOOR PLAN



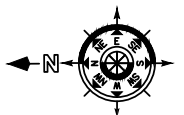
A WING 1ST FLOOR						
FLAT NO.	TYPE	CARPET AREA UNDER RERA	OPEN TERRACE & SERVICE AREA	BALCONIES & VERANDHA	TOTAL (m2)	TOTAL (sq.ft)
101	2BHK	48.97	0.00	2.16	51.13	550.35
102	2BHK	60.71	0.00	10.3	71.01	764.34
103	2BHK	51.31	0.00	6.61	57.92	623.44
104	2BHK	49.12	0.00	0.00	49.12	528.72



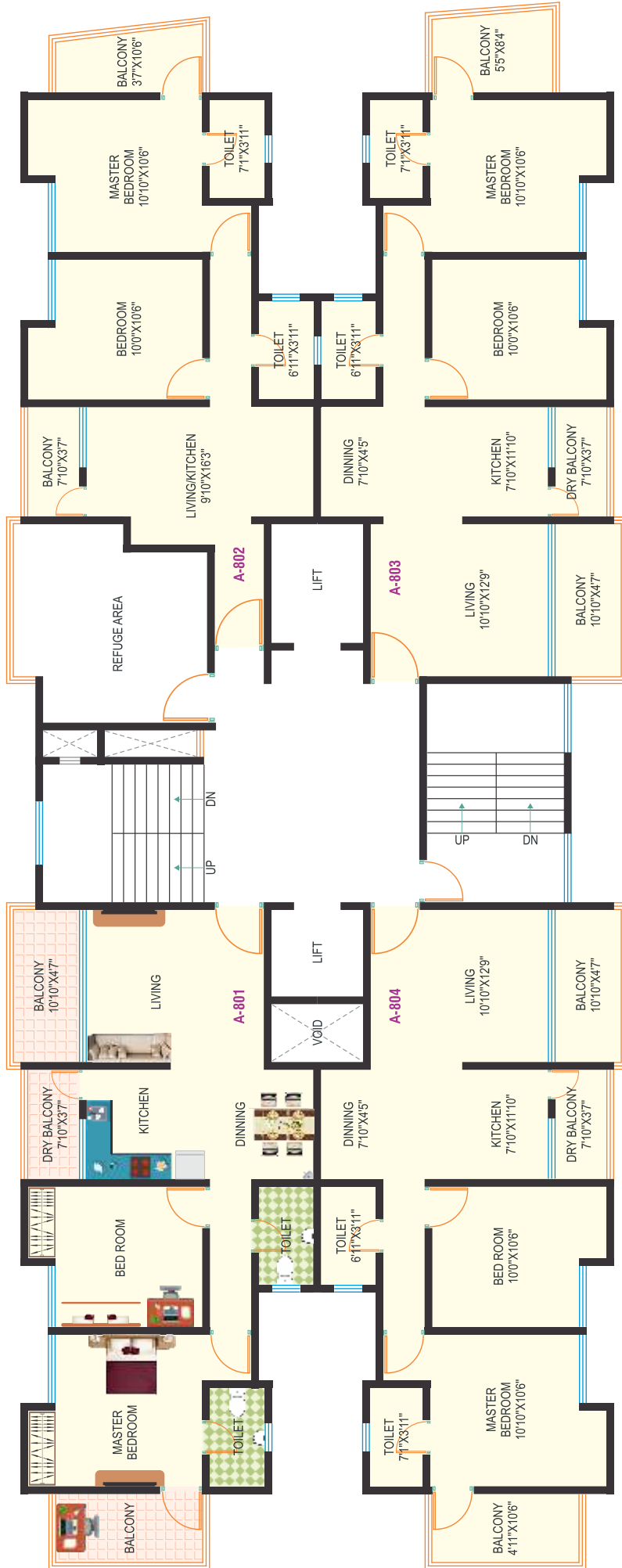
## A - WING TYPICAL FLOOR PLAN



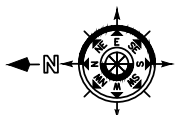
A - WING TYPICAL FLOOR						
FLAT NO.	TYPE	CARPET AREA UNDER RERA	OPEN TERRACE & SERVICE AREA	BALCONIES & VERANDHA	TOTAL (m2)	TOTAL (sq.ft)
201, 301, 401, 501, 601, 701, 901, 1001, 1101, 1201	2BHK	60.73	0.00	12.22	72.95	785.22
202, 302, 402, 502, 602, 702, 902, 1002, 1102, 1202	2BHK	60.73	0.00	11.29	72.02	775.22
203, 303, 403, 503, 603, 703, 903, 1003, 1103, 1203	2BHK	60.73	0.00	11.88	72.61	781.56
204, 304, 404, 504, 604, 704, 1004, 1104, 1204	2BHK	60.73	0.00	12.22	72.95	785.22



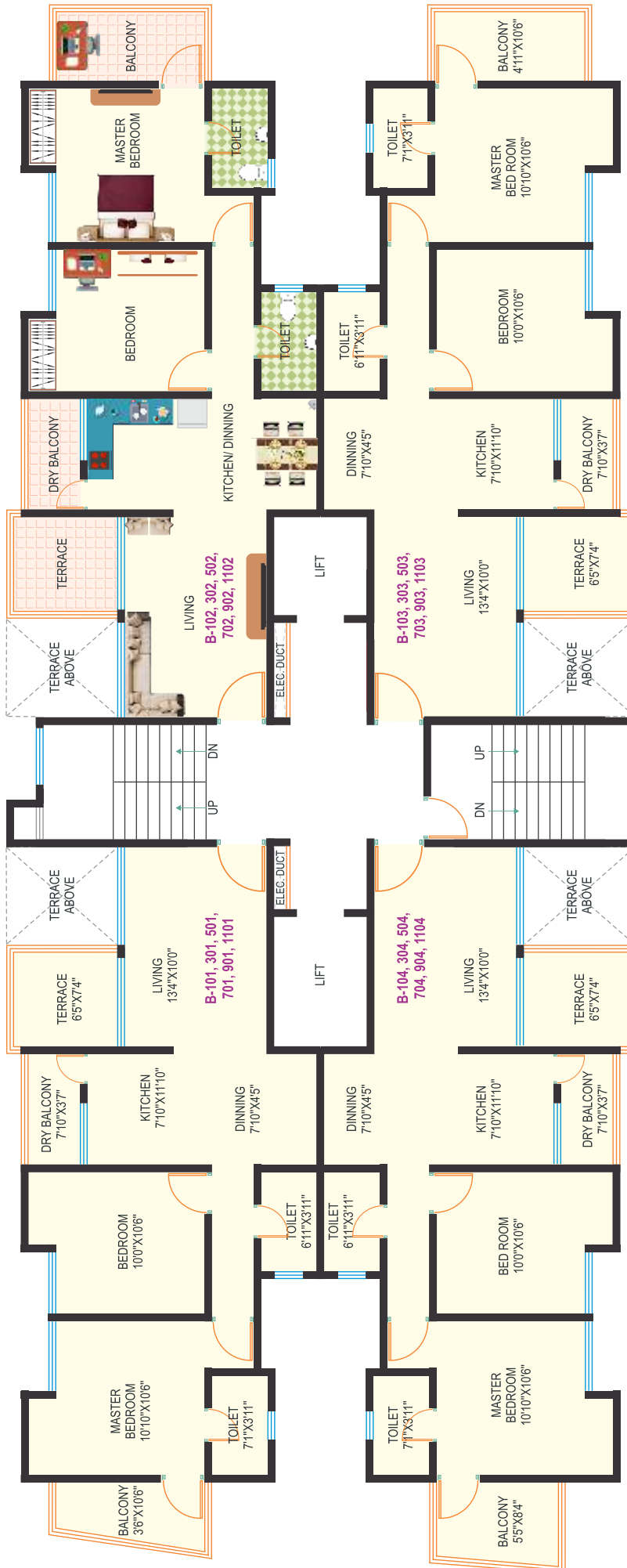
## A - WING 8<sup>th</sup> FLOOR PLAN



A WING REFUGE 8TH FLOOR						
FLAT NO.	TYPE	CARPET AREA UNDER RERA	OPEN TERRACE & SERVICE AREA	BALCONIES & VERANDHA	TOTAL (m2)	TOTAL (sq.ft)
801	2BHK	60.73	0.00	12.22	72.95	785.22
802	2BHK	50.83	0.00	6.51	57.34	617.20
803	2BHK	60.73	0.00	11.88	72.61	781.57
804	2BHK	60.73	0.00	12.22	72.95	785.22

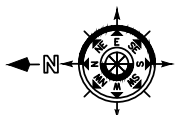


**B - WING 1<sup>st</sup>, 3<sup>rd</sup>, 5<sup>th</sup>, 7<sup>th</sup>, 9<sup>th</sup>, 11<sup>th</sup> FLOOR PLAN**



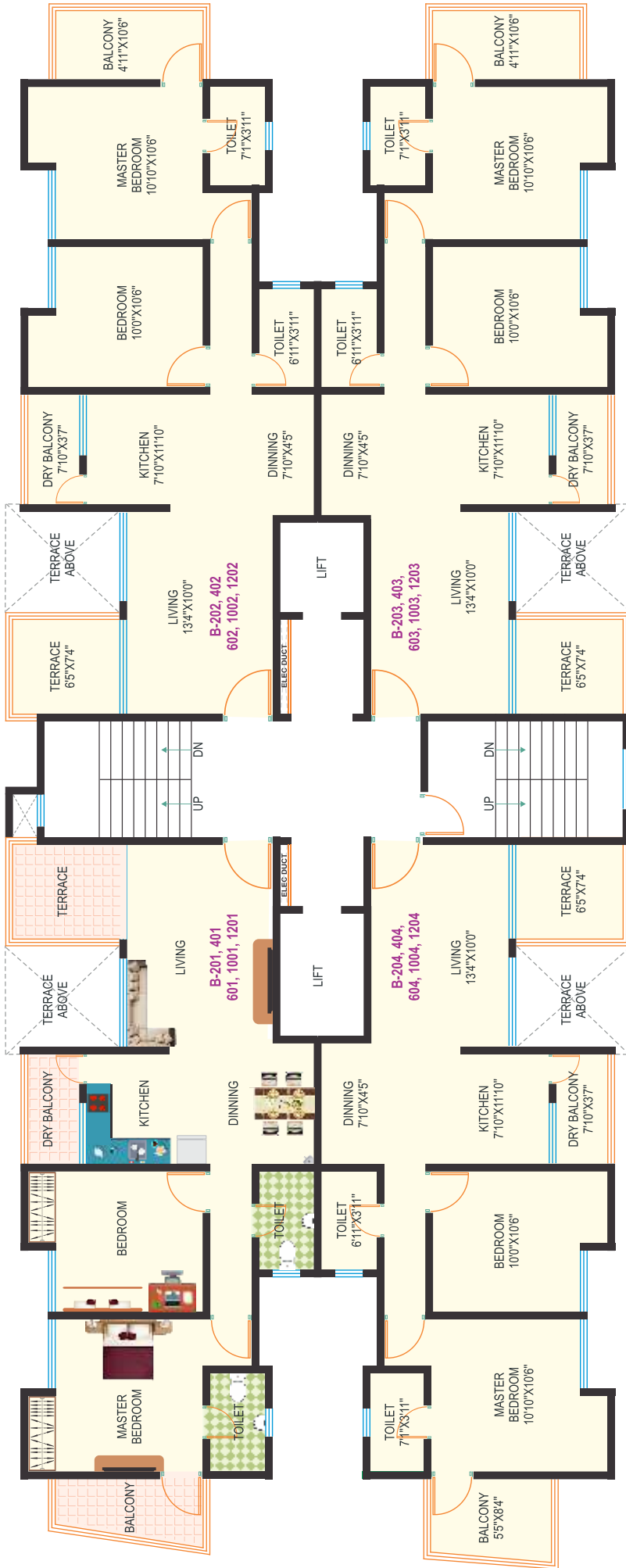
**B WING ODD FLOOR**

FLAT NO.	TYPE	CARPET AREA UNDER RERA	OPEN TERRACE & SERVICE AREA	BALCONIES & VERANDHA	TOTAL (m <sup>2</sup> )	TOTAL (sq.ft)
101, 301, 501, 701, 901, 1101	2BHK	60.09	4.34	6.4	70.83	762.40
102, 302, 502, 702, 902, 1102	2BHK	60.09	4.34	7.44	71.87	773.60
103, 303, 503, 703, 903, 1103	2BHK	60.09	4.34	7.44	71.87	773.60
104, 304, 504, 704, 904, 1104	2BHK	60.09	4.34	7.10	71.53	769.94



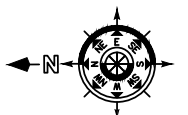


B - WING 2<sup>nd</sup>, 4<sup>th</sup>, 6<sup>th</sup>, 10<sup>th</sup>, 12<sup>th</sup> FLOOR PLAN

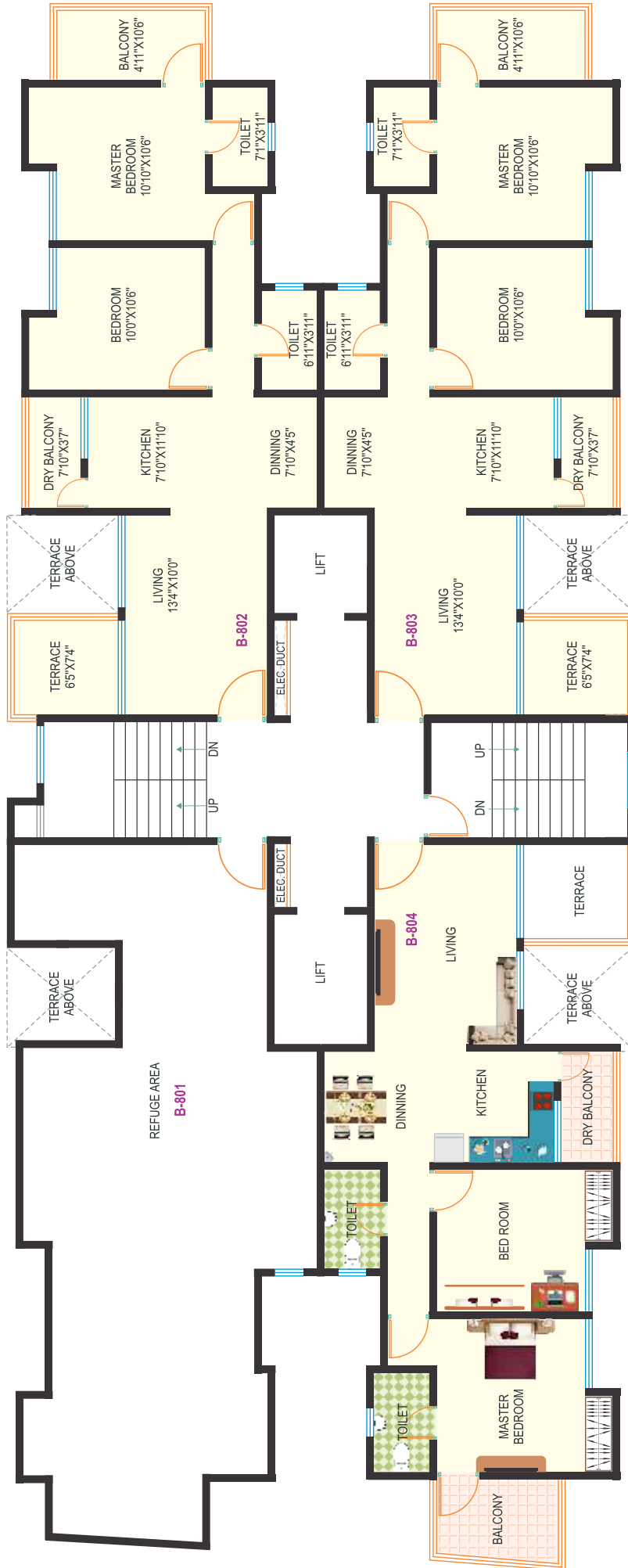


B WING EVEN FLOOR

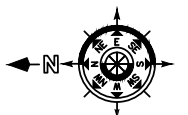
FLAT NO.	TYPE	CARPET AREA UNDER RERA	OPEN TERRACE & SERVICE AREA	BALCONIES & VERANDHA	TOTAL (m2)	TOTAL (sq.ft)
201, 401, 601, 1001, 1201	2BHK	59.95	4.34	6.40	70.69	760.90
202, 402, 602, 1002, 1202	2BHK	59.95	4.34	7.44	71.73	772.09
203, 403, 603, 1003, 1203	2BHK	59.95	4.34	7.44	71.73	772.09
204, 404, 604, 1004, 1204	2BHK	59.95	4.34	7.10	71.39	768.43



## B - WING 8<sup>th</sup> FLOOR PLAN



B - WING REFUGE						
FLAT NO.	TYPE	CARPET AREA UNDER RERA	OPEN TERRACE & SERVICE AREA	BALCONIES & VERANDHA	TOTAL (m2)	TOTAL (sq.ft)
801	Refuge					
802	2BHK	59.95	4.34	7.44	71.73	772.09
803	2BHK	59.95	4.34	7.44	71.73	772.09
804	2BHK	59.95	4.34	7.10	71.39	768.43



# A WING



# B WING







- ▶ Children Play Area
- ▶ Landscape Garden
- ▶ Open Gym

**B wing**

**A wing**



# OUR PROJECTS

## CURRENT PROJECTS



**Factory Shed for Yoshika Engineering,  
SIPCOT, Chennai**



**Project Management Consultancy  
for Saffron Developers, Sus, Pune**

## COMPLETED PROJECTS



**Nakshatra Apartment, Akurdi**



**Emerald Phase IV, Wakad**



**Emerald, Phase III, Wakad**



**Coca-Cola Building, Pirangut**



**Emerald, Wakad**



**Unique Enclave, Hadapsar**



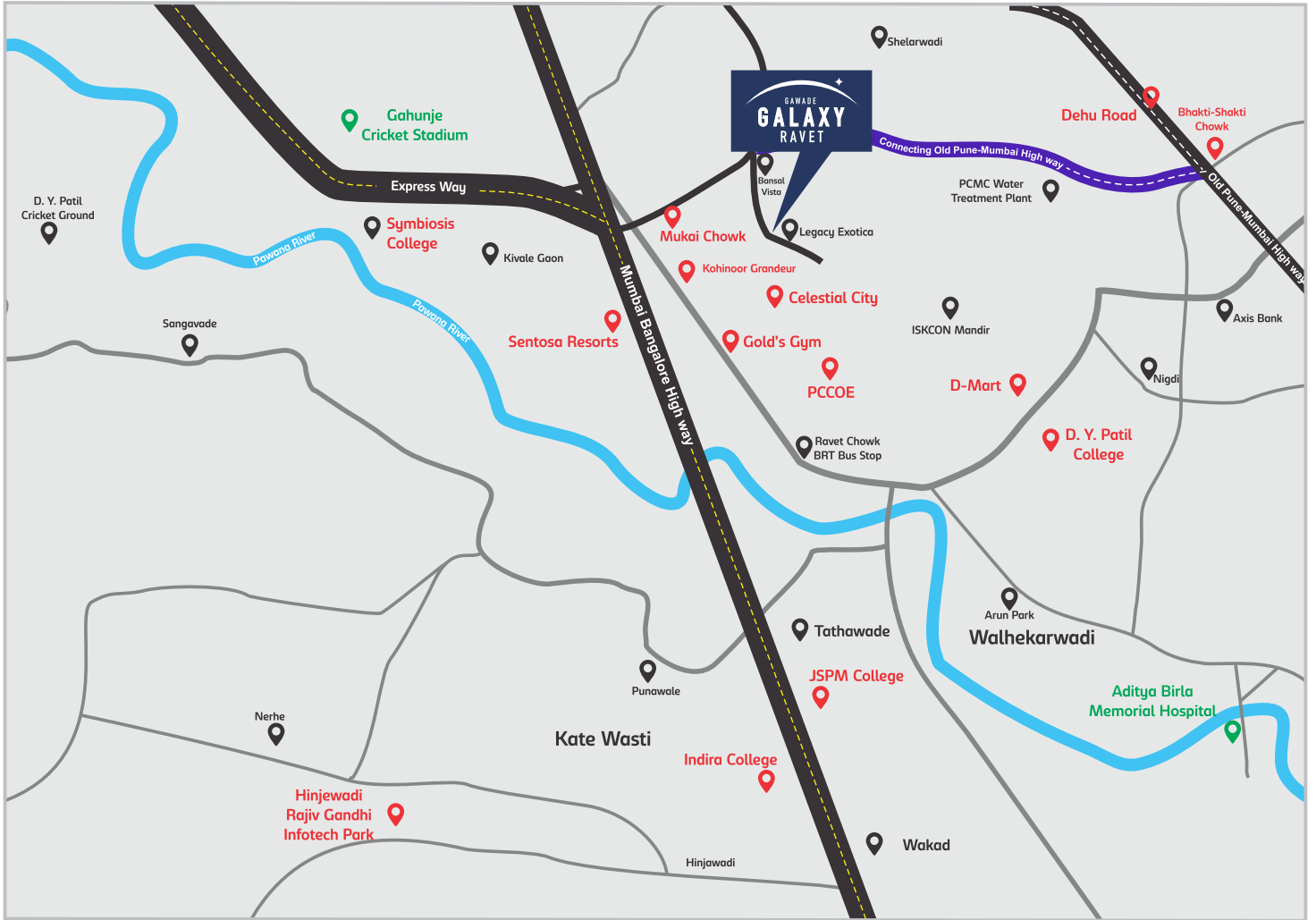
**Sushrut, Hinjewadi**



**Radiant Heat Exchange Pvt. Ltd**

GAWADE  
**GALAXY**  
RAVET





### Project Finance By



### Credits

**Architect**  
I.P. Associates

**RCC Consultant**  
S.P. Suchdev

**Legal Advisor**  
S.V. Kolse Patil

**Brand Consultant**  
Sansee Designs

### Distance

JSPM College	6.1 km
Indira College	9.5 km
D.Y. Patil College	3.7 km
Symbiosis College	3.5 km
PCCOE	2.3 km
Gahunje Stadium	5.6 km
Hinjewadi IT Park	12.1 km
Dehu Road	5.1 km
Gold Gym	3.2 km
Aditya Birla hospital	8.1 km
Expressway	2.8 km



Site Address : Galaxy' Sr. No. 74/1A/1A,  
Next to Legacy Exotica, Near Mukai Chowk,  
Ravet, Pune 412101

### GAWADE REALTY LLP

Corporate Office Address : "Gawade Business Centre", Near Bank Of Maharashtra,  
Akurdi, Pune-41 1035, Maharashtra, India.  
Call : +91-020-27242344/45, 89 56 370 370 | Email : galaxysales@gawade.com  
Web : www.gawade.com



**P52100025203**